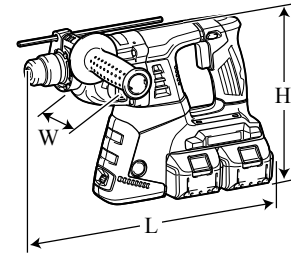




# TECHNICAL INFORMATION

**Model No.** ▶ DHR263/ DHR264

**Description** ▶ 26mm (1") Cordless Combination Hammers



The image above is model DHR263.

## CONCEPT AND MAIN APPLICATIONS

Models DHR263/ DHR264 are 26mm cordless combination hammers based on Models BHR262 and BHR262T, and powered by two 18V Li-ion batteries in series.

Their main features are:

- Compact design
- 3 operation modes (rotation only/ rotation with hammering/ hammering only)
- Battery capacity warning lamp
- XPT (eXtreme Protection Technology)

Models	Chuck system
DHR263	Normal chuck
DHR264	Quick change chuck

Dimensions: mm (")		
Model No.	DHR263	DHR264
Length (L)	350 (13-3/4)	374 (14-3/4)
Width (W)	116 (4-9/16)	
Height (H)	232 (9-1/8)	

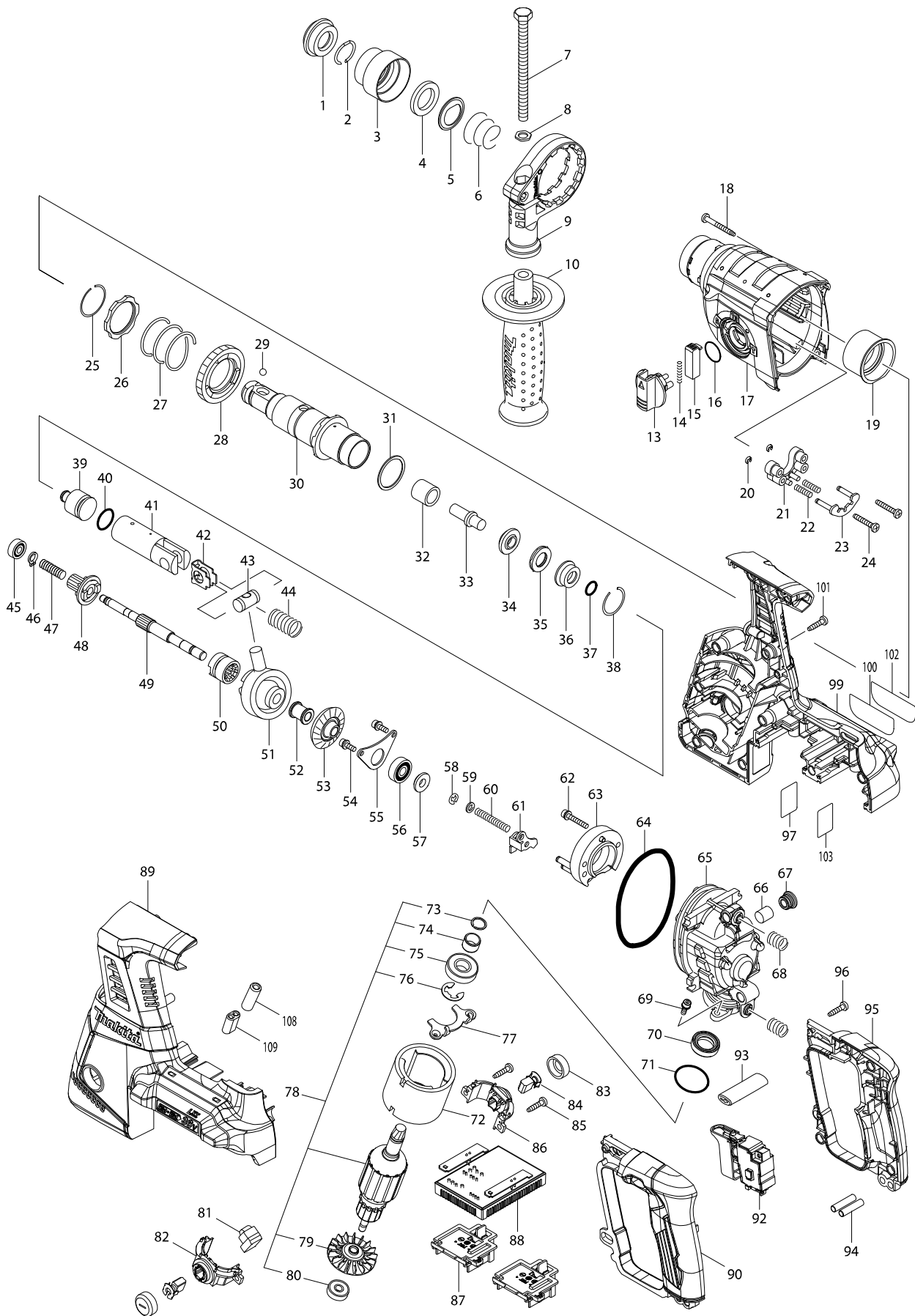
## Specification

Specification		Model	DHR263	DHR264
Battery	Voltage: V		36 (18x2)	
	Capacity: Ah		1.5, 2.0, 3.0, 4.0, 5.0	
	Energy capacity: Wh		27x2, 36x2, 54x2, 72x2, 90x2	
	Cell		Li-ion	
	Charging time (approx.): min.		15x2, 24x2, 22x2, 36x2, 45x2 with DC18RC	
Max output: W			600	
No load speed: min. <sup>-1</sup> = rpm			0 - 1,250	
Impacts per minute: min. <sup>-1</sup>			0 - 5,000	
Chuck type			Adapted for SDS-PLUS bits	Adapted for SDS-PLUS bits and Round shank bits*1
Capacity of Quick change chuck: mm (")			N/A	1.5 (1/16) - 13 (1/2)
Capacity: mm (")	Concrete	TCT bit	26 (1)	
		Core bit	54 (2-1/8)	
		Diamond core bit	65 (2-9/16)	
	Steel	13 (1/2)		
	Wood	32 (1-1/4)		
Operation mode			3 modes (Rotation only/ Rotation with hammering/ Hammering only)	
Variable speed control			Yes	
Reversing switch			Yes	
Torque limiter			Yes	
LED job light			Yes	
Weight according to EPTA-Procedure 01/2003*2: kg (lbs)			4.6 (10.1)	4.7 (10.3)

\*1 Round shank bits can also be used by replacing the factory-mounted chuck with Quick change drill chuck (keyless).

\*2 With side grip, two batteries BL1830, BL1840 or BL1850

# Model No. DHR263 26MM CRDLS COMBINATION HAMMER



**Model No. DHR263 26MM CRDLS COMBINATION HAMMER**

Item	Parts No.	Description	I/C	QTY	N/O	Opt. 1	Opt. 2	NOTE
001	286263-4	CAP 35		1				
002	233940-9	RING SPRING 19		1				
003	417629-9	CHUCK COVER		1				
004	257241-1	RING 21		1				
005	345187-4	GUIDE WASHER		1				
006	233916-6	CONICAL COMP. SPRING 21-29		1				
007	921923-8	HEX. BOLT M8X120		1				
008	345280-4	HEX. WASHER		1				
009	417630-4	GRIP BASE		1				
010	158057-6	GRIP 36 COMPLETE		1				
013	450980-4	CHANGE LEVER		1				
014	233279-0	COMPRESSION SPRING 4		1				
015	453706-3	LOCK BUTTON		1				
016	213278-8	O RING 17		1				
017	158945-7	GEAR HOUSING COMPLETE		1				
C10	213345-9	OIL SEAL 25		1				
018	266560-4	TAPPING SCREW 4X40		4				
019	153290-5	NEEDLE BEARING COMPLETE		1				
020	961017-7	STOP RING E-3		2				
021	417796-0	GUIDE BASE		1				
022	233344-5	COMPRESSION SPRING 4		2				
023	163430-7	LOCK PLATE COMPLETE		1				
024	266374-1	TAPPING SCREW 4X25		2				
025	233929-7	RING SPRING 29		1				
026	267460-1	WASHER 31		1				
027	233401-9	COMPRESSION SPRING 32		1				
028	227109-5	SPUR GEAR 51		1				
029	216022-2	STEEL BALL 7.0		1				
030	158574-6	TOOL HOLDER COMPLETE		1				
031	267229-3	FLAT WASHER 28		1				
032	331769-8	SLEEVE 9		1				
033	324669-9	IMPACT BOLT		1				
034	324402-9	RING 10		1				
035	421955-0	CUSHION RING 13		1				
036	324216-6	O RING CASE		1				
037	213073-6	O RING 9		1				
038	233917-4	RING SPRING 28		1				
039	326404-1	STRIKER		1				
040	213227-5	O RING 16		1				
041	318132-2	PISTON CYLINDER		1				
042	346036-8	GUIDE PLATE		1				
043	324215-8	PISTON JOINT		1				
044	234098-7	COMPRESSION SPRING 14		1				
045	211012-0	BALL BEARING 606ZZ		1				
046	961003-8	RETAINING RING S-7		1				
047	233343-7	COMPRESSION SPRING 7		1				
048	227179-4	SPUR GEAR 10		1				
049	325976-3	CAM SHAFT		1				

Item	Parts No.	Description	I/C	QTY	N/O	Opt. 1	Opt. 2	NOTE
050	331992-5	CLUTCH CAM		1				
051	219014-0	SWASH BEARING 10		1				
052	325640-6	SLEEVE 9		1				
053	227549-7	SPIRAL BEVEL GEAR 26		1				
054	266273-7	HEX. SOCKET HEAD BOLT M4X12		2				
055	346038-4	BEARING RETAINER B		1				
056	211032-4	BALL BEARING 608ZZ		1				
057	324212-4	RING 8		1				
058	961011-9	STOP RING E-4		1				
059	941102-2	FLAT WASHER 5		1				
060	233342-9	COMPRESSION SPRING 6		1				
061	345220-2	CHANGE PLATE		1				
062	922148-7	HEX. SOCKET HEAD BOLT M4X25		2				
063	158944-9	INNER SUPPORT COMPLETE		1				
064	213728-3	O-RING 68		1				
065	318392-6	INNER HOUSING		1				
066	443143-9	FILTER		1				
067	424185-2	CAP		1				
068	234097-9	COMPRESSION SPRING 10		2				
069	266273-7	HEX. SOCKET HEAD BOLT M4X12		2				
070	213231-4	OIL SEAL 15		1				
071	213437-4	O RING 28		1				
072	632828-4	YOKE UNIT		1				
073	961082-6	RETAINING RING WR12		1				
074	331596-3	SLEEVE 12		1				
075	211131-2	BALL BEARING 6001DDW		1				
076	961016-9	STOP RING E-10		1				
077	346037-6	BEARING RETAINER A		1				
078	519235-7	ARMATURE ASS'Y 36V		1				
D10		INC. 73-76,79,80						
079	240037-7	FAN 44		1				
080	210022-4	BALL BEARING 626DDW		1				
081	620281-6	LIGHT CIRCUIT		1				
082	644507-2	BRUSH HOLDER		1				
083	643829-7	HOLDER CAP		2				
084	194928-3	CARBON BRUSH CB-442		1	*			
084-1	195023-2	CARBON BRUSH SET CB-442	<	1				
085	266326-2	TAPPING SCREW 4X18		2				
086	644508-0	BRUSH HOLDER		1				
087	644808-8	TERMINAL		2				
088	620280-8	CONTROLLER		1				
089	187833-1	HOUSING SET		1				
C10	263005-3	RUBBER PIN 6		8				
C20	263025-7	RUBBER PIN 4		4				
C30	346783-1	PLATE		4				
C40	803F15-0	INDICATION LABEL		1				
D10		INC. 99						
090	187771-7	HANDLE SET		1				

# Model No. DHR263 26MM CRDLS COMBINATION HAMMER

Item	Parts No.	Description	I/C	QTY	N/O	Opt. 1	Opt. 2	NOTE
D10		INC. 95						
092	650721-0	SWITCH		1				
093	454980-6	F/R CHANGE LEVER		1				
094	256261-2	PIN 6		2				
095	187771-7	HANDLE SET		1				
D10		INC. 90						
096	266326-2	TAPPING SCREW 4X18		4				
097	815K28-9	DHR263 SERIAL NO. LABEL		1				
099	187833-1	HOUSING SET		1				
C10	263005-3	RUBBER PIN 6		8				
C20	263025-7	RUBBER PIN 4		4				
C30	346783-1	PLATE		4				
C40	803F15-0	INDICATION LABEL		1				
D10		INC. 89						
100	815K11-6	DHR263 NAME PLATE		1				
101	266326-2	TAPPING SCREW 4X18		10				
102	803F14-2	CLEAR LABEL		1				
103	893072-0	CLEAR LABEL		1				
A01	194683-7	GREASE VESSEL SET		1				
A02	324219-0	DEPTH GAUGE		1				
A03	443122-7	CLOTH		1				
A04B	***DC18RC	DC18RC FAST CHARGER		1				
A04Z	***DC18RC	DC18RC FAST CHARGER		1				
A05B	196015-4	BATTERY BL1830 SET		2	*			
A05Z	196015-4	BATTERY BL1830 SET		2	*			
A05-1B	196015-4	BATTERY BL1830 SET	O	2	*			
A05-1Z	196015-4	BATTERY BL1830 SET	O	2	*			
A05-2B	197600-6	BATTERY BL1830B SET	<	2				
A05-2Z	197600-6	BATTERY BL1830B SET	<	2				
A06B	142551-8	PLASTIC CASE COMPLETE		1				
C10	162271-8	LATCH		2				
C20	325636-7	SHAFT		1				
C30	450990-1	HANDLE		1				
A06Z	142551-8	PLASTIC CASE COMPLETE		1				
C10	162271-8	LATCH		2				
C20	325636-7	SHAFT		1				
C30	450990-1	HANDLE		1				